



Chemical Dosing

Measure water quality and control dosing systems to treat and purify.

Control complex sensors that require valves to be sequenced to complete a measurement.

Measure temperature, flow, pressure, level, and control valves and pumps.

Communications via 4G or 5G LTE with backup over Wi-Fi or satellite. Backup battery provided in case of power loss.

Monitor cabinets for overheating and tamper.

Connect to water quality sensors with RS232 or RS485 Modbus.

Write a simple script to control attached systems using the configurable outputs or with a serial connection.

Measure flow with integrated frequency and pulse measurement. Measure flow, pressure and level with 4-20mA inputs.

Integrated GPS for location.

Why Senquip?



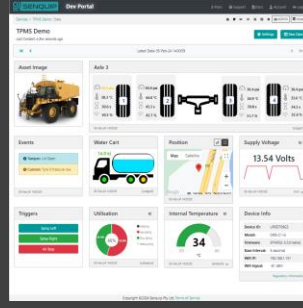
Connect to Anything

Interface to any engine, controller, or sensor, no matter the brand, physical interface, or protocol.



Process Everything

Edge process measured data, create custom alerts, and control connected systems.



Send Anywhere

Send data to the Senquip Portal or any other server. No ongoing costs, no lock in contracts.



Trusted Everywhere

Designed for use in harsh industrial, mining, and agricultural environments.



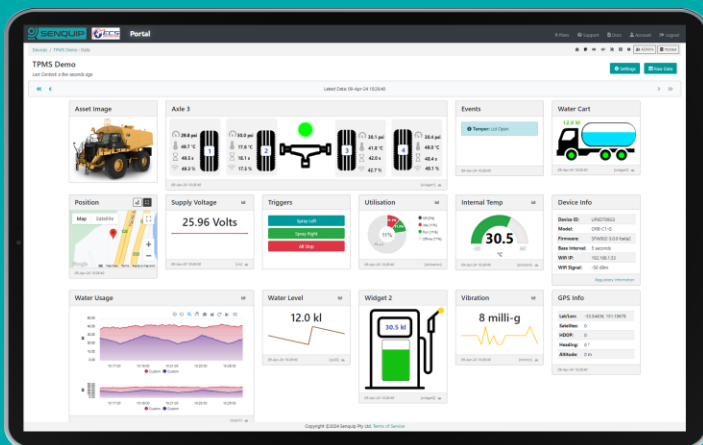
Senquip ORB

For extreme environments where IP ratings are essential and external antennas may be damaged. Typically mounted on poles, walls, and externally on machines



Senquip QUAD

For harsh environments where external antennas are a benefit. Typically found in electrical cabinets, in operator cabs, and mounted externally on machines.



Senquip Portal

The Senquip Portal is a secure cloud solution that offers a no-cost or low-cost device management and data hosting + analytics solution for Senquip devices.



TELEMETRY FOR HARSH ENVIRONMENTS